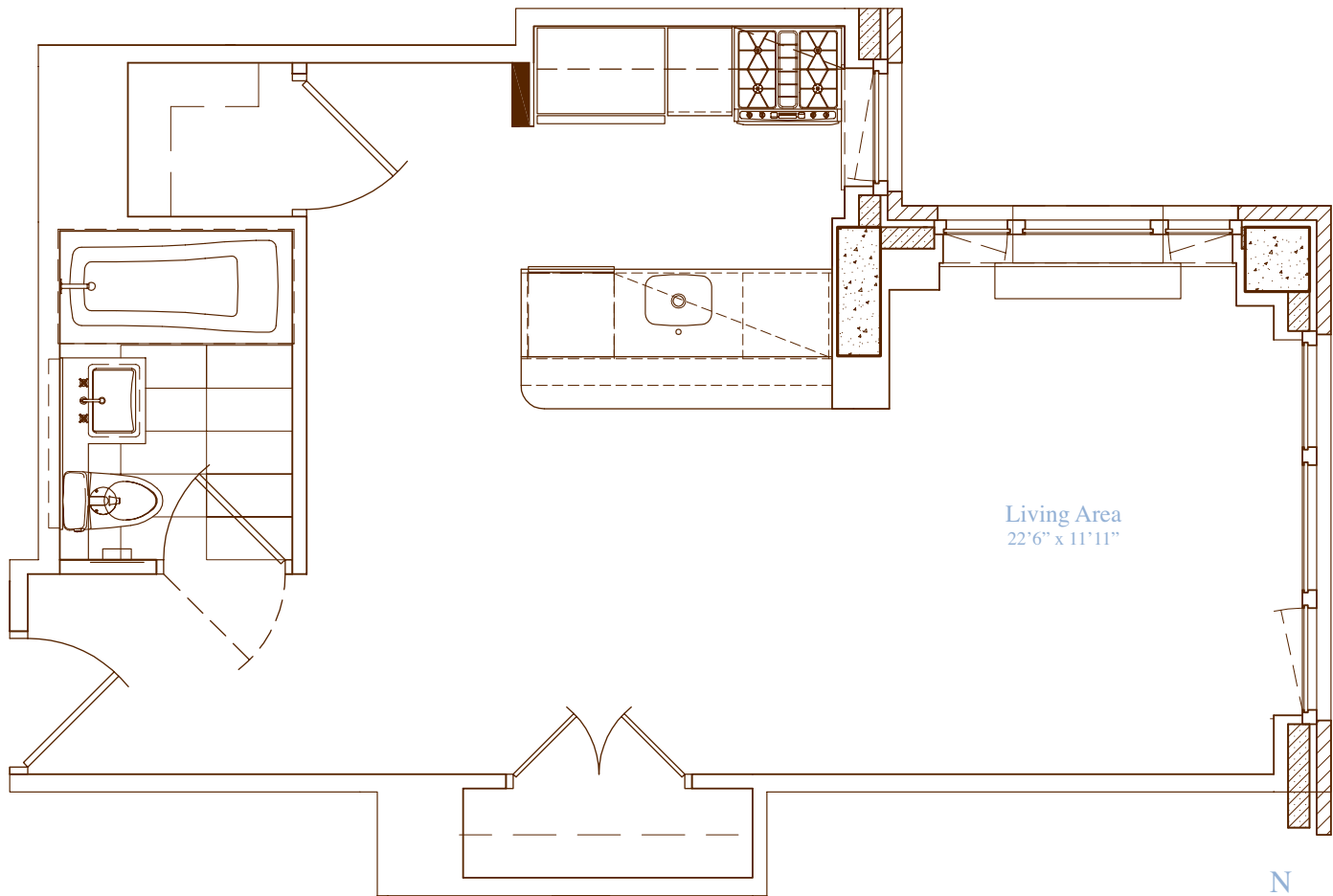
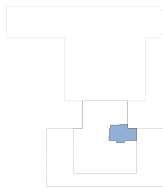


apartment: 9-14 D
 approximate square footage: 505
 bedrooms: Alcove Studio
 bathrooms: 1
 closets: 2



Living Area
 22'6" x 11'11"



finishes

- Lofted Ceilings
- Hardwood Walnut Floors

Allmilmö Kitchen

- GE Profile Stainless Steel Appliances
- Caesarstone Countertops
- Bianco Maple Cabinetry

Bathrooms

- Italian Porcelain Tile
- Kohler Fixtures
- Allmilmö Bianco Maple Cabinetry

notes

229 West | SESSANTA

sessanta60.com | 212.204.0060

All information furnished herein is from sources deemed reliable and is submitted subject to errors, omissions, change of price, prior lease, or withdrawal without notice. All dimensions are approximate. For exact dimensions, please hire your own architect or engineer.