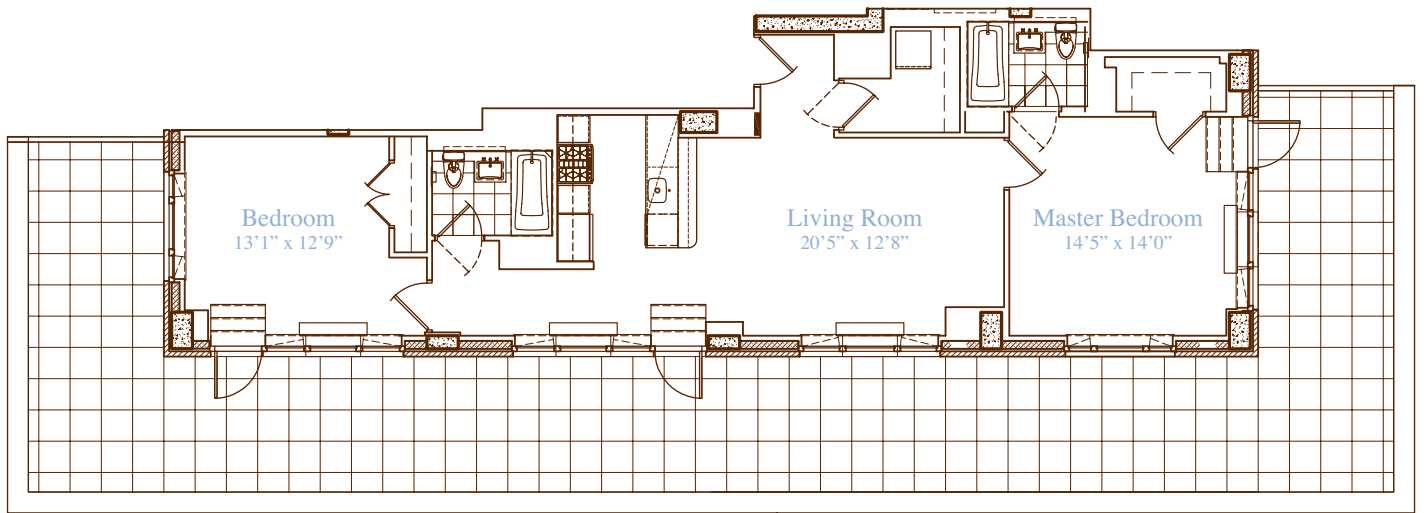


apartment: **Penthouse O**
approximate square footage: **1,218**
bedrooms: **1**
bathrooms: **1**
closets: **2 walk-in, 1 traditional**
terrace approximate square footage: **1,214**



finishes

- Lofted Ceilings
- Hardwood Walnut Floors

Allmilmö Kitchen

- GE Profile Stainless Steel Appliances
- Caesarstone Countertops
- Bianco Maple Cabinetry

Bathrooms

- Italian Porcelain Tile
- Kohler Fixtures
- Allmilmö Bianco Maple Cabinetry

Washer and Dryer Hookup

notes

229 West | **SESSANTA**
sessanta60.com | 212.204.0060