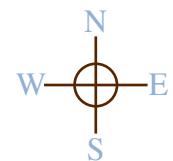
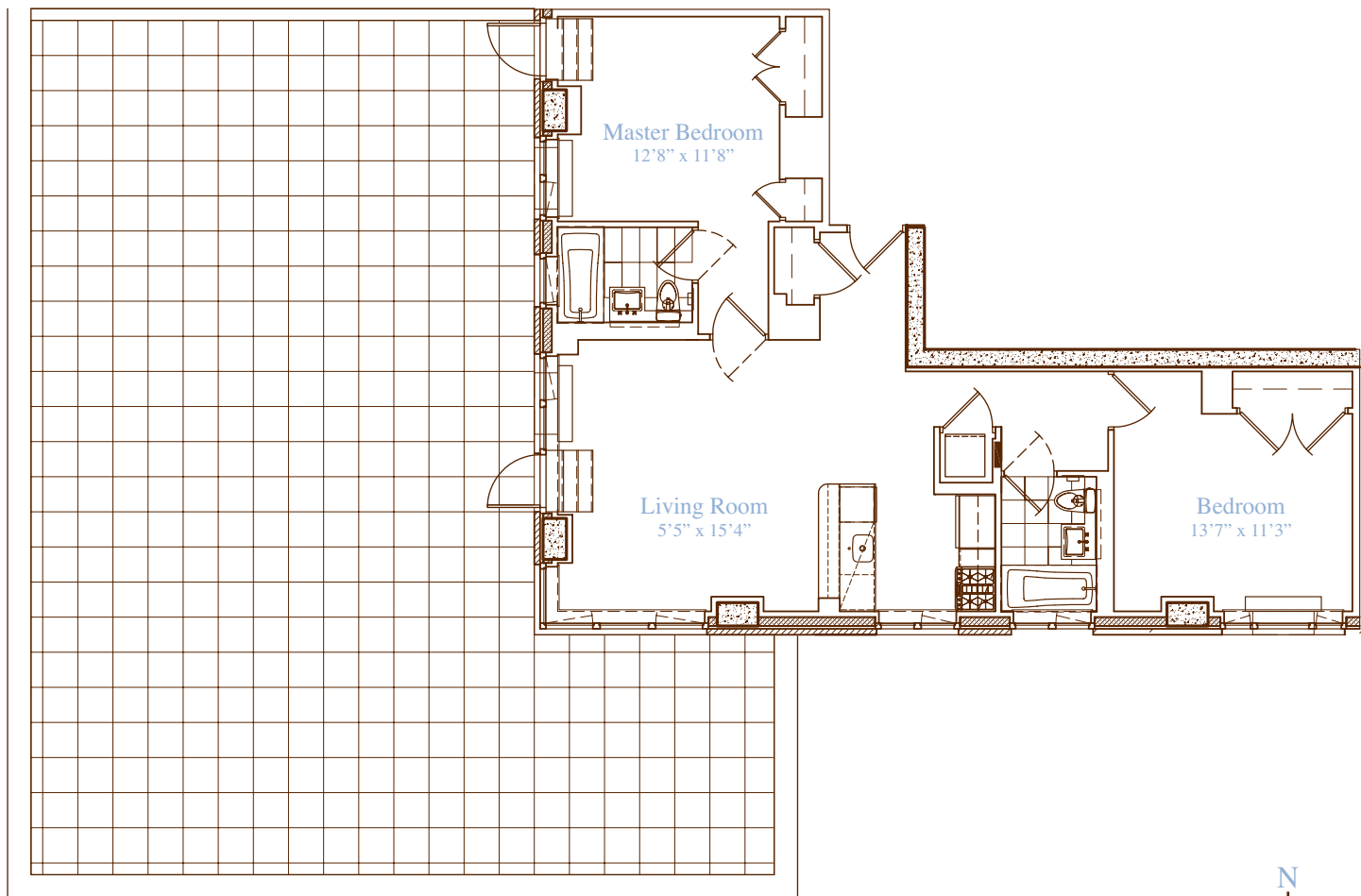


apartment: 8 A
approximate square footage: 1,084
bedrooms: 2
bathrooms: 2
closets: 5
terrace approximate square footage: 2,100



finishes

- Lofted Ceilings
- Hardwood Walnut Floors

Allmilmö Kitchen

- GE Profile Stainless Steel Appliances
- Caesarstone Countertops
- Bianco Maple Cabinetry

Bathrooms

- Italian Porcelain Tile
- Kohler Fixtures
- Allmilmö Bianco Maple Cabinetry

Washer and Dryer Hookup

notes

229 West | **SESSANTA**
sessanta60.com | 212.204.0060