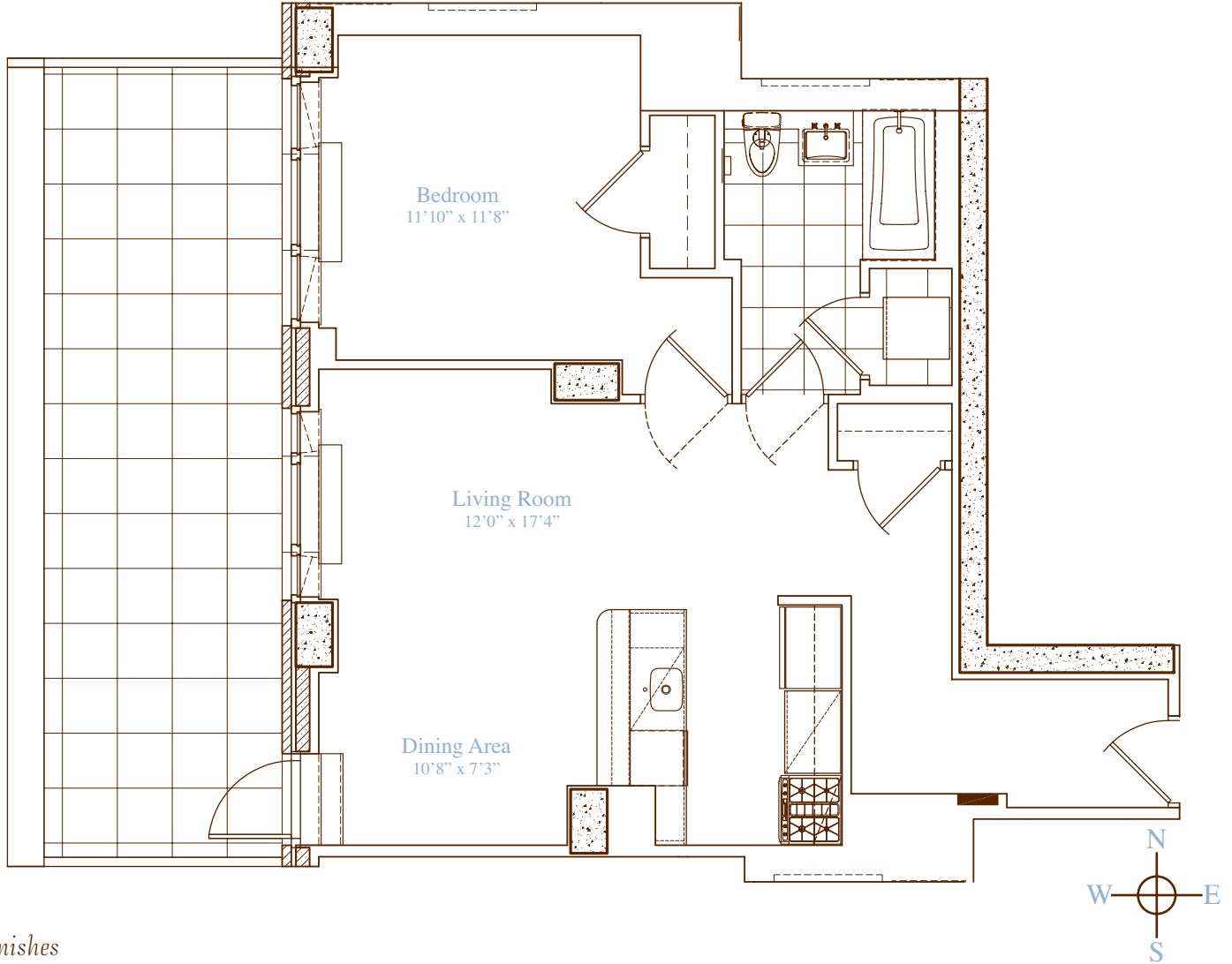


apartment: **Penthouse N**  
approximate square footage: 768  
bedrooms: 1  
bathrooms: 1  
closets: 3  
terrace approximate square footage: 294



### finishes

- Lofted Ceilings
- Hardwood Walnut Floors

### Allmilmö Kitchen

- GE Profile Stainless Steel Appliances
- Caesarstone Countertops
- Bianco Maple Cabinetry

### Bathrooms

- Italian Porcelain Tile
- Kohler Fixtures
- Allmilmö Bianco Maple Cabinetry

### Washer and Dryer Hookup

### notes

---

---

---

229 West | **SESSANTA**  
sessanta60.com | 212.204.0060