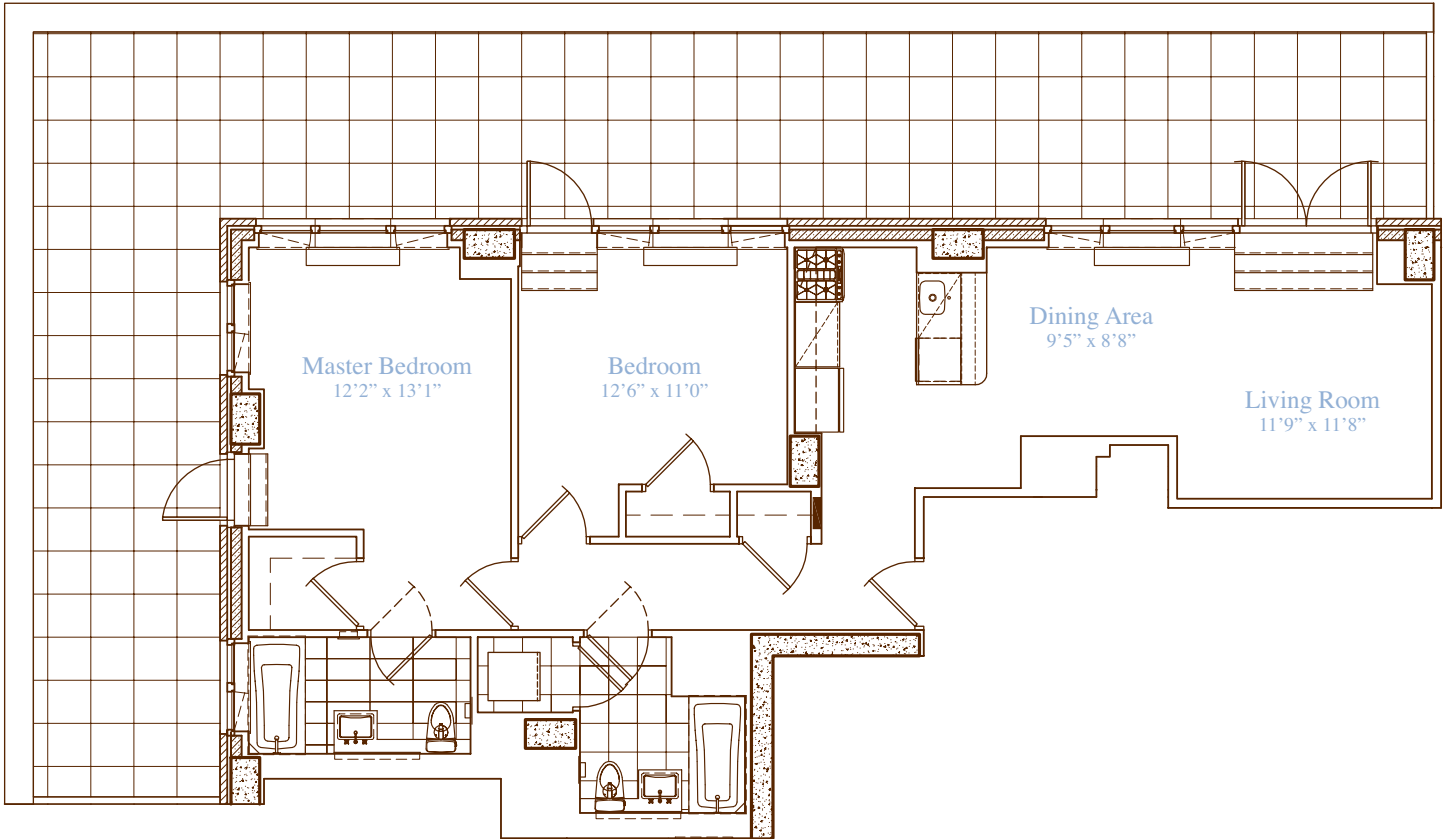


apartment: **Penthouse M**  
approximate square footage: **1,100**  
bedrooms: **2**  
bathrooms: **2**  
closets: **1 walk-in, 3 traditional**  
terrace approximate square footage: **932**



*finishes*

- Lofted Ceilings
- Hardwood Walnut Floors

Allmilmö Kitchen

- GE Profile Stainless Steel Appliances
- Caesarstone Countertops
- Bianco Maple Cabinetry

Bathrooms

- Italian Porcelain Tile
- Kohler Fixtures
- Allmilmö Bianco Maple Cabinetry

Washer and Dryer Hookup

*notes*

---

---

---

229 West | **SESSANTA**  
sessanta60.com | 212.204.0060